

Comprehensive Risk Reduction for Adult Patients with Atherosclerotic Cardiovascular Disease

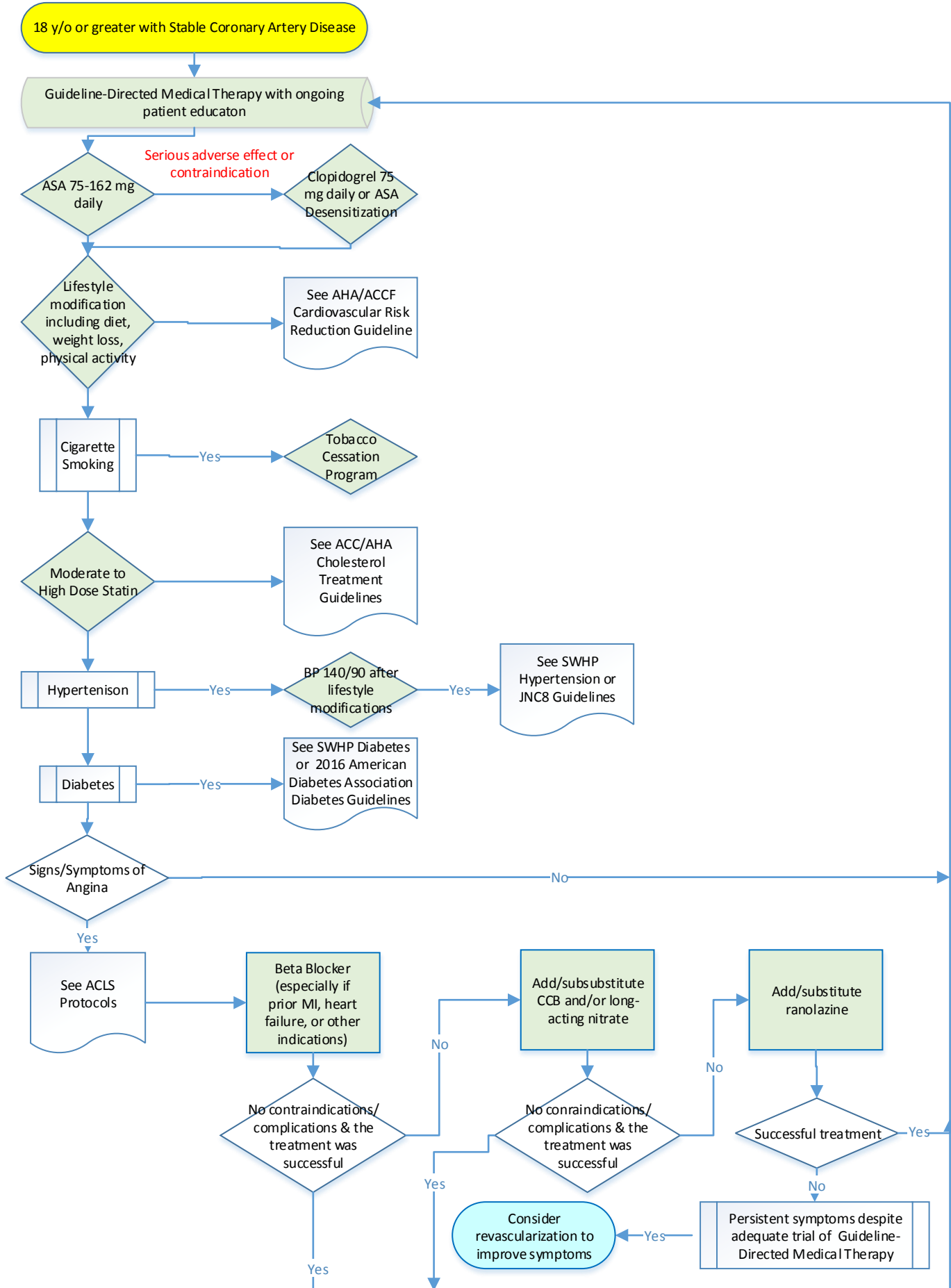
Adapted: July 21, 1999

Revised/Approved: Feb, 2008, Feb. 2010, Mar. 2012, & Apr. 2016

Purpose: The Coronary Artery Disease (CAD) Guidelines for 18 years of age and older with Stable CAD are designed to improve the management of cardiovascular disease on an outpatient basis through the use of high quality, personalized, comprehensive health care and to minimize any further progression of the disease state.

Scope: The assessment, management, treatment, and evaluation of stable coronary artery disease with or without angina.

Guideline:



Notes:

- If a man less than age 55 y/o or a woman less than 65 y/o is diagnosed with ASCVD, family screening for risk factors such as Familial Hypercholesterolemia is strongly recommended and should be discussed.
- Some guidelines recommend screening for lipoprotein (a) if there is a significant family history of ASCVD.

Source(s):

1. Dr. Emran Rouf (BSWH, Internal Med – Physician Champion Cardiovascular Workgroup), Dr. Phillip Houck (BSWH, Cardiology), & Dr. Catherine McNeal (BSWH, Cardiology)
2. American Diabetes Association. (2016). Standards of Medical Care in Diabetes - 2016. *Diabetes Care*, 39(suppl 1), S1-S106.
3. Coronary Artery Disease/Coronary Heart Disease - American Family Physician. (2016). Retrieved March 31, 2016, from <http://www.aafp.org/afp/topicModules/viewTopicModule.htm?topicModuleId=4>
4. University of Zaragoza. (n.d.). ASARiskCalculator. Retrieved June 8, 2016, from <https://softwarecorp.es/asariskcalculator/public/calculator/en>
5. 2014 Evidence-Based Guidelines for the Management of High Blood Pressure in Adults: Report from the Panel Members Appointed to the Eighth Joint National Committee (JNC8) - *JAMA*. 2014; 311(5):507-520. doi:10.1001/jama.2013.284427.
6. 2013 ACC/AHA Guideline on the Treatment of Blood Cholesterol to Reduce Atherosclerotic Cardiovascular Risk in Adults: A Report of the American College of Cardiology/American Heart Association Task Force on Practice Guidelines - *Journal of the American College of Cardiology*. 2013;Nov 123; [Epub ahead of print].
7. 2012 ACCF/AHA/ACP/AATS/PNCA/SCAI/STS Guideline for the Diagnosis and Management of Patients with Stable Ischemic Heart Disease: Executive Summary – *Journal of the American College of Cardiology*. 2012; 60(24):2564-2603. doi:10.1016/j.jacc.2012.07.012